



INFRASTRUCTURE UPDATE

Sewer Separation: 31st & Broadway

CONSTRUCTION COMPLETED: **SEPTEMBER 2022**

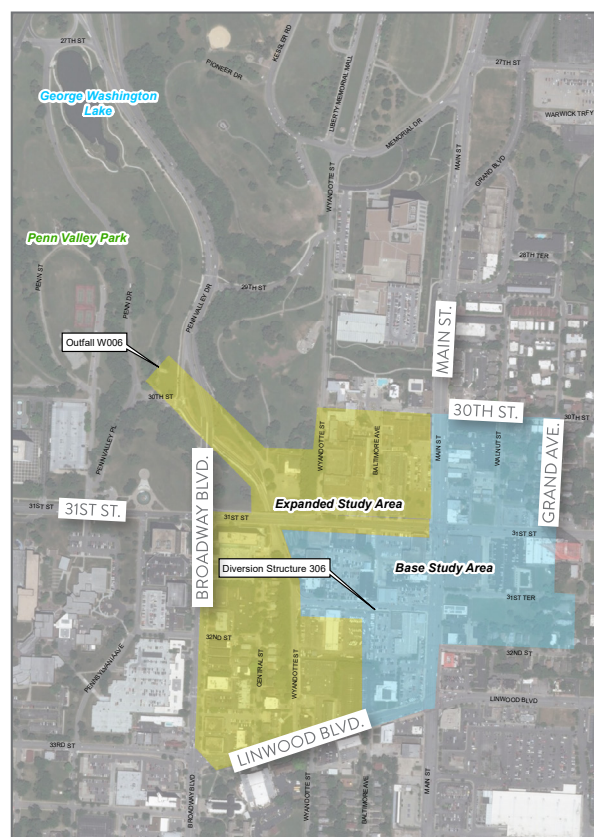
TOTAL CONTRACT AMOUNT: **\$5,307,000**

KC Water constructed important improvements to the wastewater system in your neighborhood as part of the 31st and Broadway Sewer Separation project. The project involved separating the existing combined sewer system into separate storm and sanitary sewers. Now complete, this project has improved the capacity of the wastewater collection system and reduced the volume of sewer overflows into Penn Valley Park.

PROJECT AREA

THIS PROJECT WAS LOCATED WITHIN THE TURKEY CREEK BASIN:

- NORTH: 30TH STREET
- SOUTH: LINWOOD BOULEVARD
- EAST: GRAND AVENUE
- WEST: BROADWAY BOULEVARD



STAY UP TO DATE:

KCSMARTSEWER.US

@KCMOWATER

@KCMOWATER

@KCMOWATER

REPORT A PROBLEM:

REPORT AN ISSUE ONLINE: KCMO.GOV/311

CALL: (816) 513-1313 / 311



Sewer Separation: 31st and Broadway

WHAT WORK WAS DONE?

This project included separating approximately 35 acres of the City's combined sewer system, replacing 1,500 linear feet of water mains, and elimination of combined sewer outfall W006 and diversion structure DS306.

WHY SEPARATE THE SEWERS?

In your area, one sewer pipe carried both wastewater and stormwater as part of a combined sewer system. When it rained, this combined sewer system must carry both rainwater and wastewater. When it rains, combined sewer systems are designed to overflow discharge diluted wastewater directly into local waterways. For this project, KC Water installed a second piping system to separate stormwater and wastewater flows, reducing the frequency and volume of sewer overflows into local waterways. This improves water quality while protecting our natural environment and public health.

WHO DID THE WORK?

KC Water was assisted by its program manager, Burns & McDonnell; its design professional, Tetra Tech; and its construction contractor, Pyramid Excavation and Construction, Inc.

WHAT'S THE "CONSENT DECREE"?

In 2010, the City of Kansas City, Missouri entered into a federal Consent Decree with the United States Environmental Protection Agency to reduce the volume and frequency of overflows from the City's sewer system. KC Water's Smart Sewer program is a multi-decade effort to address this challenge through 2040. The 31st and Broadway Sewer Separation Project was one piece of the Smart Sewer program, and was required by the Consent Decree to be completed by December 31, 2022.



www.kcsmartsewer.us